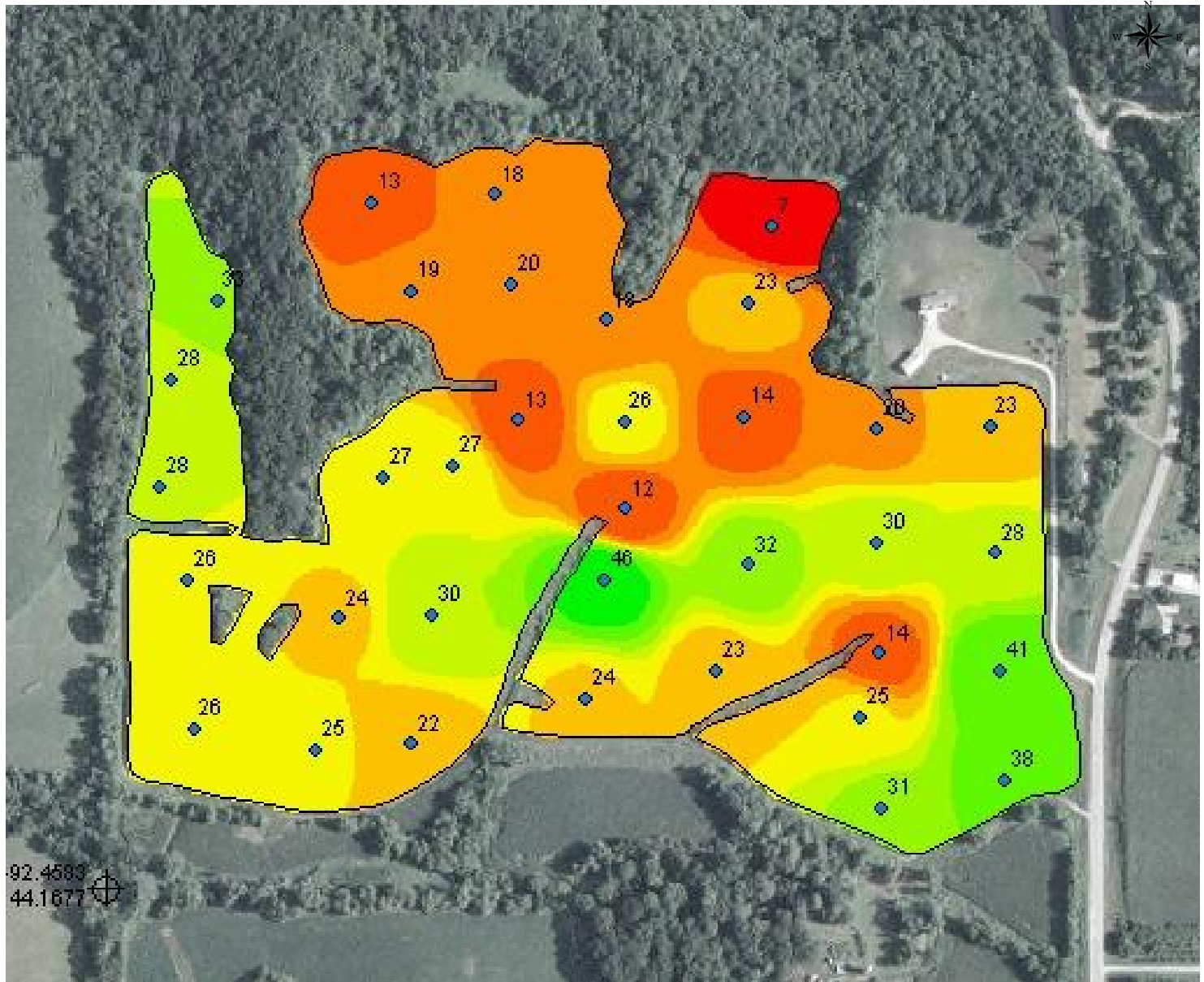


# Mom's Farm - Home South

## Soil Test Phosphorus (Bray P-1, 1:1)



**Customer:** Joe Farmer  
**Boundary Area:** 72.12 (ac)  
**Min:** 7.00 (ppm)  
**Avg:** 24.42 (ppm)  
**Max:** 46.00 (ppm)  
**Std. Dev.:** 6.88 (ppm)  
**Sample Depth:** 0 (in) - 6 (in)  
**Start Date:** 10/22/2003 9:44:29 PM  
**End Date:** 10/22/2003 9:44:57 PM

p_bray1(ppm)	ac	
7.00 - 10.90	1.64	◆ P Bray1
10.90 - 16.36	6.83	□ Field Boundary
16.36 - 20.85	14.09	
20.85 - 24.35	12.38	
24.35 - 27.28	17.17	
27.28 - 30.20	10.51	
30.20 - 35.27	5.96	
35.27 - 41.51	4.20	
41.51 - 46.00	0.90	



Progressive Ag-Plainview